

SECTION 36, T.7N., R.3W., S.L.B.&M.

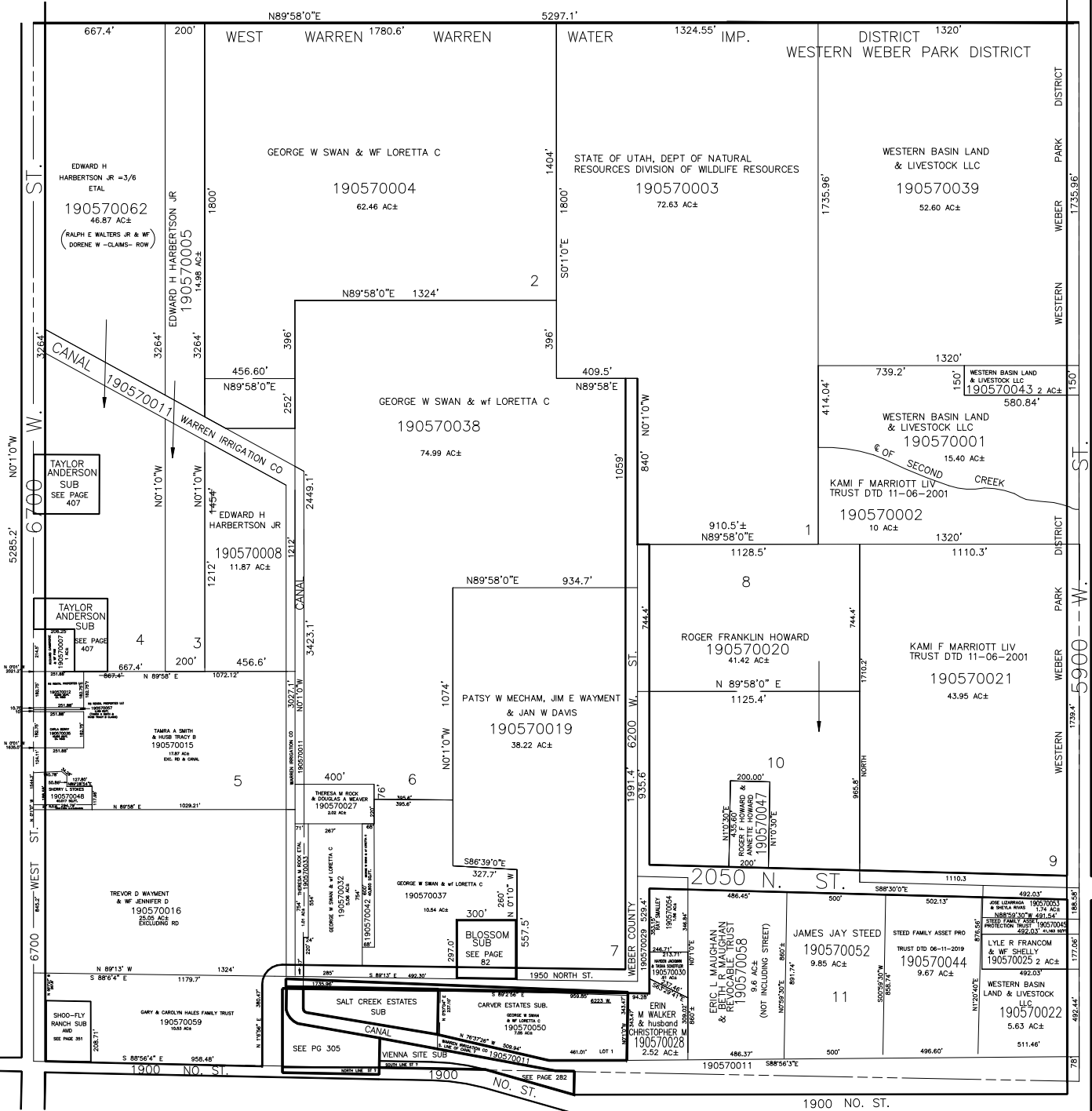
IN WEBER COUNTY  
SCALE 1" = 400'

TAXING UNIT: 531

SEE P. 48

SEE P. 56

SEE P. 29



SEE BOOK 10, P. 28-3

SEE BOOK 10, P. 28

NOTE: SEE ORIGINAL PLAT IN BOOK 6, P.71  
FOR COMPLETE DATA